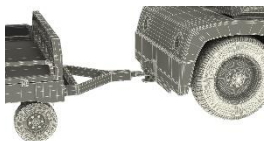


KSEA- Seattle - (FSX-P3Dv4) – Drzewiecki Designs Seattle X

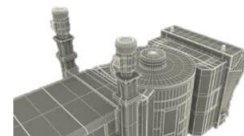
*GSX Level 2 customization by
CARTAYNA FILES*





CARTAYNA GSX Level 2 CONFIGURATION FILES

KSEA- Seattle - (FSX-P3Dv4) – Drzewiecki Designs Seattle X



Seattle–Tacoma International Airport (IATA: SEA, ICAO: KSEA, FAA LID: SEA), also referred to as Sea–Tac, is the primary commercial airport serving the Seattle metropolitan area in the U.S. state of Washington. It is in the city of SeaTac, approximately 13 miles (21 km) south of Downtown Seattle. The airport, the largest in the Pacific Northwest region of North America, is owned and operated by the Port of Seattle. The airport has flights to cities throughout North America, Europe, the Middle East and Asia. It is the main hub for Alaska Airlines and its regional subsidiary Horizon Air, whose headquarters are near the airport. It is a hub and international gateway to Asia and Europe for Delta Air Lines, which has expanded at Sea-Tac since 2011. The airport is the 28th busiest airport in the world by passenger traffic, serving over 45 million passengers in 2016, and is considered one of the fastest growing in the United States and the world. (from DD web page)

With this scenery brought with the support of DD, we celebrate our 60th configuration added to our bunch. Stanislaw Drzewiecki has decided to join our project, adding the rest of the sceneries to be developed by Cartayna Files as a sign of support and thanks to this project that I started six months ago. Drzewiecki started in 2003 to develop what is today one of the largest and finest list of scenery and has had in their DNA since day one, the guts to dare to do some of the largest airports of the world. Also has been one of the first to develop since long ago sceneries for **all** the Sim platforms. His amazing EPWA and his long ago existing Polish Airports were famous since time ago for their design and constant upgrades, making them a must to have and fly. In the USA has developed the very ambitious NY Airports and the complex NYC. Washington is another large project with an amazing scenery of Washington D.C. (another must). What has been an incredible surprise, is this jewel that I have not tested before and exceeded my highest expectations: Seattle X. I give you here the possibility of having 3 configurations and in case you want to use his very nice jetways, this is possible to. This way you can enjoy my hard-worked pushbacks, vehicles, and dockings. The textures of the buildings of a scenery of this size is quite an accomplishment. Night, day, sunrise and sunsets are an amazing gift to the eye. Textures inside the terminals have been thoroughly worked. Moving airport train and vehicles gives this scenery even more realism. I must say this scenery, specially considering the size is a 10/10. Get the scenery and judge for yourself.

C
o
n
t
e
n
t

3 possible configurations!

- Glass, more creative and perhaps better suited than reality.
- Metal, using the best choice of jetways to match the real-life Airport configuration.
- With DD jetways, If you wish to use the Drzewiecki Designs jetways and profit from the rest, don't do step 2.
- ✓ Pushbacks checked for all parking's. Facing N,S, etc. added on each pushback. Also Nose Right (NR) & (NL) for the less experienced pilots!
- ✓ Configured: 136 Parking spaces of which 79 have jetways.
- ✓ Parking excel sheet with airlines, jetways and other specs.
- ✓ All vehicles placed in a suitable position.

HOW TO INSTALL:

FIRST: Drop the desired jetway configuration with a folder named "**VIRTUALI**" that is within the "Roaming-glass or metal" and drop it in the folder named **ROAMING** in your **APPDATA** folder (to find this folder, type %appdata% on your explorer).

SECOND: Set to **".OFF"** the **"KSEA.\$DX"** file located in the **C:\ProgramData\12bPilot\SODE\sdX\DrzewieckiDesign** folder.

IMPORTANT NOTICE:

- ✓ There is **ONLY ONE** file in your **C:\Users\YOU\AppData\Roaming\Virtuali\GSX** that starts with the four letters of the scenery config you are importing from Cartayna Configuration files.
- ✓ Also make sure once you enter the simulator to go to the **Add-on Menu > Coautl settings > Restart Coautl** and rebuild airport cache. After doing this, if you don't see all the jetways, restart the Coautl 2-3 times or until **ALL** jetways show on the scenery.
- ✓ See my chapter 6 on how to install: https://www.youtube.com/playlist?list=PL_jo_TDZG12UYkZ_tZ58ThN6ZDVyh_Uqg
- ✓ Visit my page in the FSDT Forums: <http://www.fsdreamteam.com/forum/index.php/topic,19008.msg131922.html#msg131922>

To **PURCHASE** the scenery, press on SimMarket logo.



A special thanks to



&





