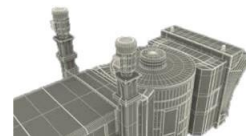


CARTAYNA GSX Level 2 CONFIGURATION FILES

GCRR - Lanzarote - (FSX-P3DV4) - MKStudios



César Manrique-Lanzarote Airport (IATA: ACE, ICAO: GCRR) (Spanish: Aeropuerto de César Manrique-Lanzarote), commonly known as Lanzarote Airport and also known as Arrecife Airport, is the airport serving the island of Lanzarote in the Canary Islands. The airport is located in San Bartolomé, Las Palmas, 5 kms (3.1 mi) southwest of the island's capital, Arrecife handles flights to many European airports, with hundreds of thousands of tourists each year, as well as internal flights to other Spanish airports. It handled 7,327,019 passengers in 2018.

Average ONLY 18 days of rain during year, high temperatures and what we, virtual pilots like most... windy approaches in diverse areas like Canary Islands. Are you ready for another challenge to bring your passengers safely to their lovely holiday destination? Welcome to Lanzarote airport. It handles flights to many European airports, with hundreds of thousands of tourists each year, as well as internal flights to other Spanish airports. It handled 5,883,039 passengers in 2014. It's also a great place to start your journey to another island with Binter Canarias or Canaryfly. With newest technology used to develop this scenery we achieved stunning level of details keeping great performance along with amazing visuals.

3 possible configurations!

- *Glass, more creative and perhaps better suited than reality.*
- *Metal, using the best choice of jetways to match the real-life Airport configuration.*
- *With Default jetways, If you wish to use the default scenery jets and profit from the rest, don't do step SECOND.*
- ✓ *Pushbacks checked for all parking's. Facing N,S, etc. added on each pushback. Also Nose Right (NR) & (NL) for the less experienced pilots!*
- ✓ *All vehicles placed in a suitable position.*
- ✓ *Parking excel sheet with airlines (when available) and other specs.*
- ✓ *AFCAD (waiting for developers ok): Added Airlines, modified one pushback lane, changed the category of half of the*

- High quality rendition of Lanzarote airport and ALL island,
- Accurate and detailed airport infrastructure based on real sizes and dimensions,
- Detailed AFCAD adjusted for AI addons with custom approaches and nav aids,
- Ultra-high-resolution ground textures with new mapping methods, no more flat and unrealistic textures,
- Photo real terrain coverage of all island,
- Hundred thousand of custom placed Autogen buildings all around the island,
- Custom high resolution (5m) mesh,
- 3D night lighting,
- Very realistic night lighting, based on real pilot's point of view,
- Dynamic Lightning (P3D V4),
- Optimized to take advantages of new P3D V4 features,
- Compatible to all major traffic add-ons,
- SODE jetways supported,
- Advanced, fully working VDGS docking system for GSX users!
- Simple VDGS docking system for non GSX users,
- Vector data addons compatibility.

HOW TO INSTALL:

FIRST: Drop the desired jetway configuration with a folder named "**VIRTUAL**" that is within the "Roaming-glass or metal" and drop it in the folder named **ROAMING** in your **APPDATA** folder (to find this folder, type %appdata% on your explorer).

SECOND: You need to do a simple modification of the sode file that comes with the scenery: "**MKSTUDIOS_Lzn.xml**" file located in the **C:\ProgramData\12bPilot\SODE\xml** folder. Edit the file and DELETE all text that comes after the line (included): **<Stand AfcadICAO=...** and **<SODE>**. leave the this last **<SODE>** Save file and exit the text editor.

IMPORTANT NOTICE:

- ✓ There is ONLY ONE file in your **C:\Users\YOU\AppData\Roaming\Virtual\GSX** that starts with the four letters of the scenery config you are importing from Cartayna Configuration files.
- ✓ Also make sure once you enter the simulator to go to the **Add-on Menu > Coautl settings > Restart Coautl and rebuild airport cache**. After doing this, if you don't see all the jetways, restart the Coautl 2-3 times or until ALL jetways show on the scenery.
- ✓ See my chapter 6 on how to install: https://www.youtube.com/playlist?list=PL_jo_TDZG12UYkZ_tZ58ThN6ZDVyh_Ukq
- ✓ Visit my page in the FSDT Forums: <http://www.fsdreamteam.com/forum/index.php/topic,19008.msg131922.html#msg131922>



